

Downtown Shelby Manors

For Lease in Spring 2016

Starting at \$1,200/month

Northeast Corner of 24
Mile and Van Dyke Avenue

Call - (586) 992-9313

1100 SF—1600 SF Apartments

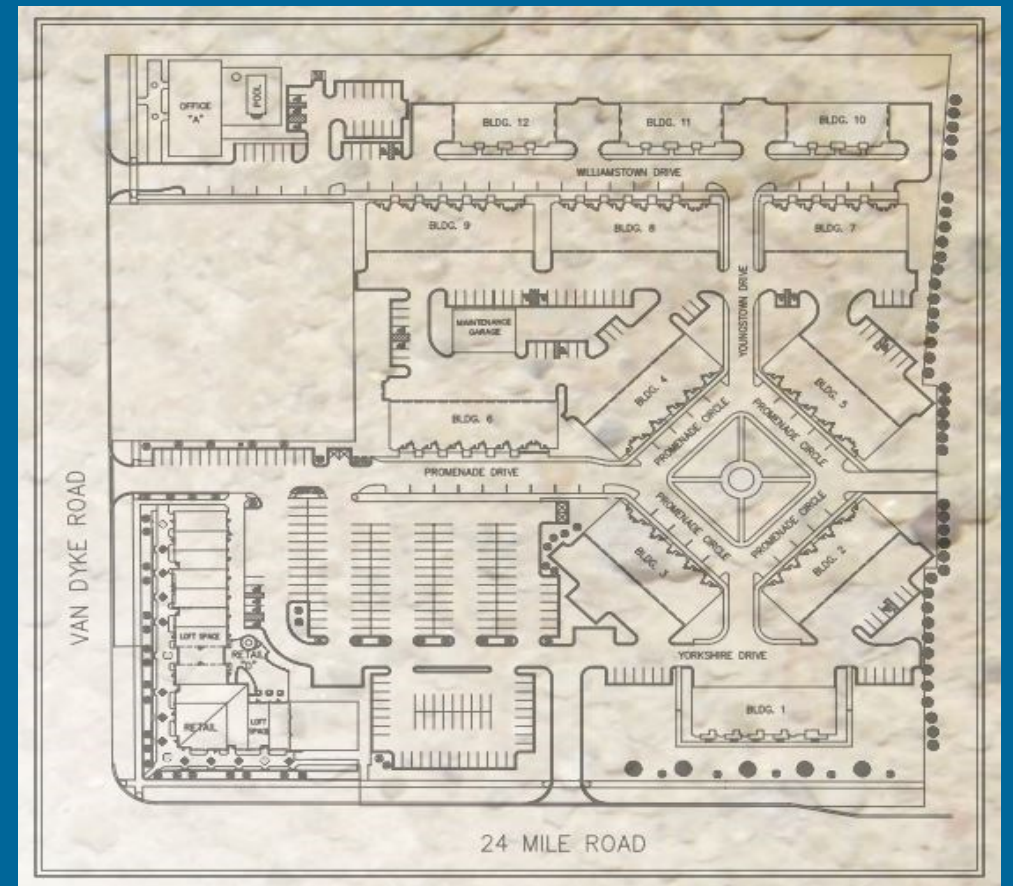
One, Two, and Three Bedroom Options

Clubhouse, Pool and Workout Facilities

Individual balcony/patio for each unit

Private entrances for each unit

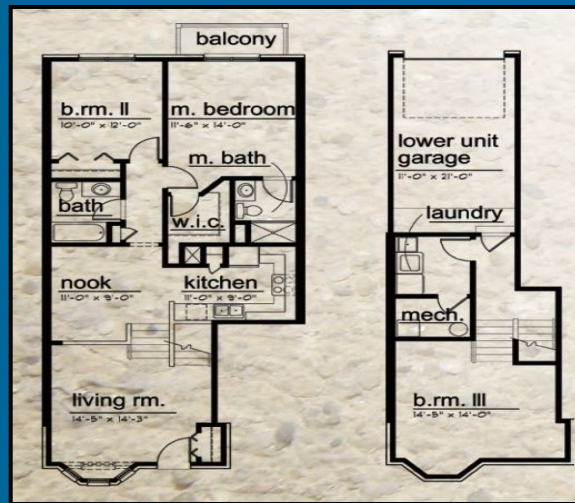
www.DowntownShelbyManors.com



Floor Plans

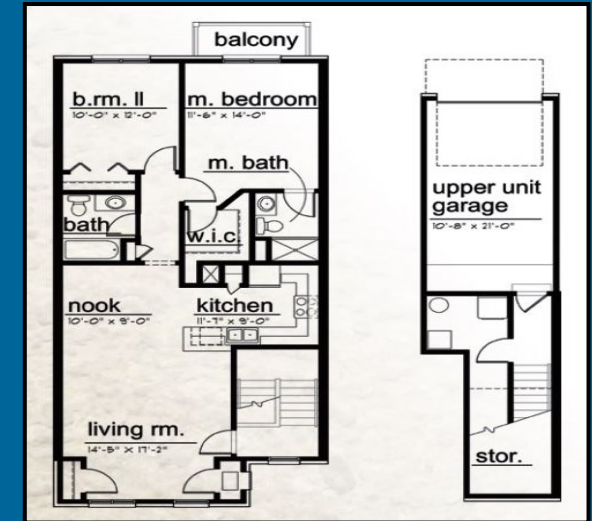
The Manhattan

3 Bedroom, 2 Bathroom, 2 Floors
1,575 SF, starting at \$1,675/month



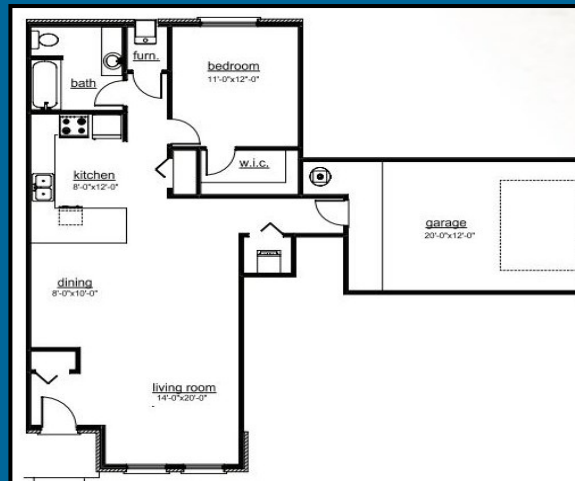
The Madison

2 Bedroom, 2 Bathroom, 2 Floors
1,325 SF, starting at \$1,375/month



The Baltic

1 Bedroom, 1 Bathroom, 1 Floor
1,100 SF, starting at \$1,200/month



The Churchill

1 Bedroom, 1 Bathroom, 1 Floor
1,100 SF, starting at \$1,200/month

